

**INTIMATES**  
BASICS CATALOGUE  
**2020**



NuORDER IS YOUR NEW DIGITAL WHOLESALE DESTINATION TO BROWSE UPCOMING COLLECTIONS AND PRODUCT LINES, BUILD DRAFT ORDERS AND DISCOVER THE LATEST MARKETING COLLATERAL FROM HANES.



**STREAMLINE MARKET APPOINTMENTS**

Preview collections & digital linesheets on your phone or tablet ahead of market appointments.

**ASSORTMENT PLANNING MADE EASY**

Drag n' drop products into a custom list to get a complete visual picture of what will be in store each month. Identify gaps in the assortment by reviewing SKU depth across category, color and delivery. Never lose track of your order again. Simply login to see all your historical sales data from order status to delivery date.

**FASTER IN-SEASON REPLENISHMENTS**

Quickly browse products by immediate and upcoming stock availability to place reorders 24/7/365.



**WORK IN THE CLOUD**  
Fast & Easy



**MOBILE FRIENDLY**  
Online & Offline



**2 WAY ORDERING**  
Buyer & Seller

**To register your store for access to the site, email:**

**[pbugretail@hanes.com](mailto:pbugretail@hanes.com)**



For general enquiries or Brandsnet technical difficulties:

**EMAIL: [pbugretail@hanes.com](mailto:pbugretail@hanes.com)**



**B**ERLEI PAGES 4-41



*Playtex*® PAGES 42-51

<b>BERLEI EVERYDAY</b>	<b>5 -17</b>	<b>BERLEI SPORT</b>	<b>24-33</b>
Barely There Contour <b>Y250B/S</b>	6	BerleiTech Smooth UW Bra <b>YY4K</b>	27
Barely There Cotton Contour <b>Y289P</b>	6	BerleiTech Ultimate Performance <b>YXXH</b>	27
Barely There Luxe Contour <b>YZPE</b>	8	Full Support Underwire <b>Y533WB</b>	28
Barely There Lace Contour <b>YYTP</b>	8	Electrify Mesh Underwire <b>YYN7</b>	28
Barely There Deluxe Contour <b>YZ6Z</b>	9	Electrify Mesh Contour <b>YYPV</b>	29
Barely There Cotton Maternity Wirefree <b>YZS9</b>	9	Electrify Mesh Crop <b>YYPV</b>	29
Womankind T-Shirt <b>YYCR</b>	10	Electrify Mesh Wirefree <b>YY87</b>	30
UnderState Wirefree <b>YY46</b>	11	Electrify Underwire <b>Y556W</b>	30
UnderState Demi <b>YY64</b>	12	ProElite Mesh Crop <b>YYLN</b>	31
UnderState Coverage <b>YY4A</b>	12	Shift Contour <b>YYRJ</b>	32
Lift & Shape Mesh T-Shirt <b>YY8L</b>	14	Shift Underwire <b>YYRK</b>	32
Lift & Shape T-Shirt <b>Y584UB</b>	14	Active Cut Boyleg <b>WWRW1A</b>	33
Lift & Shape Non-Contour <b>YZKD</b>	15		
Ultimate Comfort Strapless <b>Y441S</b>	15	<b>BERLEI BRIEFS</b>	<b>34-41</b>
The Sensation Natural Lift <b>YYPM</b>	16	Barely There Lace Full Brief <b>WVFB</b>	36
The Sensation T-Shirt Lace <b>YYPN</b>	16	Barely There Lace Bikini <b>WWUT1A</b>	36
So Smooth T-Shirt <b>YZL6</b>	17	Barely There Luxe Boyleg <b>WX8H1A</b>	37
		Nothing Micro Hipster <b>WZD31A</b>	37
<b>BERLEI CLASSICS</b>	<b>18-20</b>	Nothing Micro Hi Cut <b>WZD21A</b>	38
Sweatgirl Non-Contour <b>Y50275</b>	19	Lace Bikini <b>WVF9</b>	38
All Day Comfort <b>Y193KB</b>	19	Nothing Naturals G-String <b>WZD01A</b>	39
Classic Lace Underwire <b>Y5568B</b>	20	Nothing Naturals Hi Cut <b>WZCY1A</b>	39
Minimising Underwire <b>Y516SB</b>	20	Nothing Naturals Hipster <b>WZCZ1A</b>	40
		Nothing Naturals Full Brief <b>WZCX1A</b>	40
<b>BERLEI POST SURGERY</b>	<b>21-23</b>	Nothing Naturals Camisole <b>WYZU1A</b>	41
Post-Surgery Crop <b>Y130W</b>	22		
Caring For You Soft Form <b>W130W</b>	22		
Barely There Deluxe Post-Surgery <b>YYEQ</b>	23		
Post-Surgery Active <b>YXVV</b>	23		



## BASICS CATALOGUE 2020

### **COMFORT REVOLUTION 44-46**

Flex Fit Non-Contour	44
Flex Fit Contour	44
Flex Fit Contour Dot	45
Contour Swirl	46

### **LOVE MY CURVES 47**

Floral Delustre	47
Ultralight illusion Neckline Underwire	47

### **18 HOUR 48-51**

Ultimate lift And Support Posture Bra	49
Cross Your Heart	49
Ultimate Lift And Support Wirefree	50
Comfort Strap Wirefree	51
Fits Beautiful Wirefree	51



**B**ERLEI EVERYDAY



## BARELY THERE CONTOUR

Y250B = Black

Y250S = All other colours

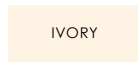
- Barely There, our no.1 everyday bra, is designed in a smooth light-weight fabric, so it's easy to fit and soft against the skin.
- Soft stretch quality fabric and cups create a great shape.
- Self covered comfort straps for everyday wear.
- Double layered back gore and padded hook and eye minimises dig-in and maximises support.

	10	12	14	16	18	20
A	•	•	•			
B	•	•	•	•		
C	•	•	•	•	•	•
D	•	•	•	•	•	•
DD	•	•	•	•	•	•
E	•	•	•	•	•	•



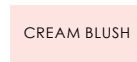
BLACK

CODE: BLK



IVORY

CODE: C48



CREAM BLUSH

CODE: QH4\*



WHITE

CODE: WHI\*



SKIN

CODE: SKN



\* 20DD, 18-20E not available in QH4.

\* 20E not available in WHI.



## BARELY THERE COTTON CONTOUR Y289P

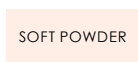
- Barely There, our no.1 everyday bra, comes in a super soft, light-weight, cotton-rich fabric to deliver exceptional breathability and comfort.
- Crafted from a light-weight fabric that is easy to fit and soft against the skin.
- Soft lined moulded cups create a great shape.
- Self covered comfort straps for everyday wear.
- Double layered back gore and padded hook and eye minimises dig-in and maximises support.

	10	12	14	16	18
A		•	•		
B	•	•	•	•	
C	•	•	•	•	•
D	•	•	•	•	•
DD	•	•	•	•	•
E		•	•	•	



BLACK

CODE: BLK



SOFT POWDER

CODE: S81





A woman with blonde hair tied up is sitting in a light pink armchair. She is wearing a white, seamless, T-shirt style bra and matching white underwear. She is looking directly at the camera with a slight smile. Her right hand is resting on the back of the chair, and her left hand is resting on the seat. The background is a light-colored wall with horizontal lines.

## BARELY THERE

So comfortable,  
a Barely There  
T-Shirt bra is sold  
every minute.



## BARELY THERE LUXE CONTOUR YZPE

- Soft stretch lace along the neckline adds a feminine finish.
- Crafted from silky lightweight fabric for a smooth shape under clothing.
- Creates a great shape that moves with your body.
- Comfortable straps for all day wear.
- Double layered back gore maximises support and padded hook and eye minimises dig-in for comfort.
- Coordinating boyleg brief available.

	10	12	14	16	18
B	•	•	•	•	
C	•	•	•	•	•
D	•	•	•	•	•
DD	•	•	•	•	•
E	•	•	•		

**BLACK**

CODE: BLK\*

**SOFT POWDER**

CODE: S81\*

**IVORY**

CODE: C48\*

\*10B, not available in C48.

\*10E not available in S81 and BLK.



## BARELY THERE LACE CONTOUR YYTP

- Lace version of the Barely There, our no. 1 everyday bra.
- All over soft stretch lace for a smooth shape under clothing.
- Soft lined moulded cups move with your body for an easy fit.
- Double layered back gore and padded hook and eye minimises dig-in and maximises support.
- Coordinating brief available.

	10	12	14	16	18
A	•	•	•		
B	•	•	•	•	
C	•	•	•	•	•
D	•	•	•	•	•
DD	•	•	•	•	•
E	•	•	•	•	•

**BLACK**

CODE: BLK

**IVORY**

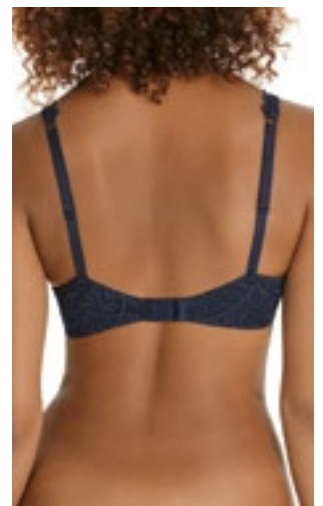
CODE: C48

**NUDE LACE**

CODE: PPT

**NAVY**

CODE: POD





## BARELY THERE DELUXE CONTOUR YZ6Z

- Smooth galloon lace updates the popular Barely There Luxe style with tonal colour for a vintage look.
- Crafted from lightweight fabric for a smooth shape under clothing.
- Creates a great shape that moves with your body.
- Self covered comfort straps for everyday wear.
- Double layered back gore and padded hook and eye minimises dig-in and maximises support.

	10	12	14	16
A		•	•	
B	•	•	•	•
C	•	•	•	•
D	•	•	•	•
DD	•	•	•	•
E		•	•	

BLACK

CODE: BLK

PELICAN

CODE: YU2

\*While stocks last.



## BARELY THERE COTTON MATERNITY WIREFREE YZS9

- Barely There style in a maternity wirefree bra.
- Soft cotton-rich fabric inside and out with minimal stitching against the skin for comfort for all day wear.
- Easy one-hand nursing clip and drop-cup sling.
- Extendable padded hook and eye to fit your changing body.
- Padded straps prevent shoulder dig-in.

	10	12	14	16	18
C	•	•	•	•	
D	•	•	•	•	•
DD	•	•	•	•	•
E	•	•	•	•	•
F	•	•	•	•	

BLACK

CODE: BLK

SOFT POWDER

CODE: S81

WHITE

CODE: WHI\*

\*WHI while stocks last.



## WOMANKIND T-SHIRT YYCR\*

The Womankind T-Shirt Bra is a revolutionary new bra by Berlei that uses lightweight 3D spacer technology to mould to, and flatter your natural shape for comfort and support.

- Unique double faced cup with stretch cotton against the skin for comfort and smooth microfibre outer layer.
- Stretch shoulder straps move with your body.

	10	12	14	16	18
A		•	•		
B	•	•	•	•	
C	•	•	•	•	•
D	•	•	•	•	•
DD	•	•	•	•	•
E	•	•	•	•	

BLACK

CODE: BLK

NUDE 2

CODE: PPN

\*While stocks last.



## UNDERSTATE WIREFREE YY46

Designed to go unnoticed, our UnderState bra has four-way stretch foam cups which mould to your shape and an ultra-thin infinity edge neckline which eliminates lines.

- Wirefree for all day comfort.
- Smoothing sidebands to reduce back and underarm bulge.

	8	10	12	14	16
A		•	•	•	
B	•	•	•	•	•
C	•	•	•	•	•
D	•	•	•	•	•
DD		•	•	•	

BLACK

CODE: BLK

NUDE 2

CODE: PPN



## UNDERSTATE DEMI YY64

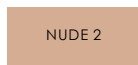
- Four-way stretch foam cups that mould to your natural shape.
- Demi design perfect for lower cut clothing.
- Ultra-thin neckline designed to go unnoticed under clothing.
- Smoothing sidebands to reduce back and underarm bulge.

	8	10	12	14	16
A		•	•	•	
B	•	•	•	•	•
C	•	•	•	•	•
D		•	•	•	•
DD		•	•	•	•



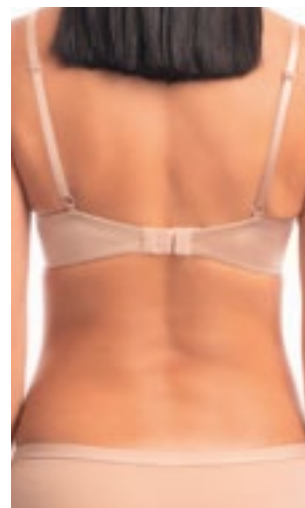
BLACK

CODE: BLK



NUDE 2

CODE: PPN



## UNDERSTATE COVERAGE YY4A

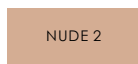
- Four-way stretch foam cups that mould to your natural shape.
- Full Coverage design.
- Ultra-thin neckline for a seamless look under clothing.
- Smoothing sidebands to reduce back and underarm bulge.

	10	12	14	16	18	20
B	•	•	•	•	•	
C	•	•	•	•	•	•
D	•	•	•	•	•	•
DD	•	•	•	•	•	•
E	•	•	•	•	•	



BLACK

CODE: BLK



NUDE 2

CODE: PPN



NUDE LACE

CODE: PPT\*



\*18B not available in PPT.

## LIFT & SHAPE

Lifts and supports  
without the bulk.





## LIFT & SHAPE MESH T-SHIRT Y Y8L

- A contoured underwire bra perfect for everyday wear that is designed with a discreet uplift panel and foam cups for added support for fuller busts.
- Low front styling for versatility under clothes.
- Modern, soft, lace design.

	10	12	14	16	18	20	22	24
D			•	•	•	•		
DD	•	•	•	•	•	•	•	•
E	•	•	•	•	•	•	•	•
F	•	•	•	•				
G		•	•					



BLACK  
CODE: BLK



NUDE LACE  
CODE: PPT



## LIFT & SHAPE T-SHIRT Y584UB

- A contoured, underwire bra perfect for everyday wear that is designed for support, comfort and creates a great shape.
- Moulded cups for a sleek silhouette.
- Discreet uplift panel within cup lining provides added support for fuller busts.
- Multi-way straps provide versatility.

	10	12	14	16	18	20	22	24
D			•	•	•	•		
DD	•	•	•	•	•	•	•	•
E	•	•	•	•	•	•	•	•
F	•	•	•	•	•			
G			•	•	•			



BLACK FLOWER  
CODE: P83\*



PEARL NUDE  
CODE: P81



\*Size 24 only available in P83.





## LIFT & SHAPE NON-CONTOUR YZKD

- Discreet uplift panel within cup lining provides added support for fuller busts.
- Light back smoothing panels and moulded cups reduce bulges for a smooth silhouette under clothes.
- Stretch shoulder straps move with your body for easy all day wear.

	12	14	16	18	20	22	24
C	•	•	•	•			
D	•	•	•	•			
DD	•	•	•	•	•	•	•
E	•	•	•	•	•	•	•
F	•	•	•	•			
G	•	•	•	•			

BLACK FLOWER

CODE: P83

PEARL NUDE

CODE: P81



## ULTIMATE COMFORT STRAPLESS Y441S

- Moulded cups for a great shape under clothing.
- Smooth fabric for an easy fit that is soft and comfortable against the skin.
- Flexible underarm boning delivers security and support.
- Low centre front provides versatility under clothing.
- Silicone placement designed to hold the bra in place.
- Multi-way straps provide versatility.

	10	12	14	16	18
B	•	•	•		
C	•	•	•	•	•
D	•	•	•	•	•
DD	•	•	•	•	•
E	•	•	•	•	

BLACK

CODE: BLK

LATTE

CODE: LAT





## THE SENSATION NATURAL LIFT YYPM\*

- Gentle wire provides natural shaping and a flexible fit.
- Smooth suede-esque fabric.
- Delicate lace gore offers a gorgeous finish and sits flat under clothes.

	10	12	14	16
A	•	•	•	
B	•	•	•	•
C	•	•	•	•
D	•	•	•	•

BLACK

CODE: BLK

NUDE LACE

CODE: PPT\*\*

\*While stocks last.

\*\*16B Not available in PPT.

\* No 10A, 14A, 14B, 16B in BLK.



## THE SENSATION T-SHIRT LACE YYPN\*

- Smooth suede touch fabric, soft stretch foam cups and stretch shoulder straps move with your body for comfort and an easy fit.
- Lace trim gives a feminine finish while still flat and wearable under clothing.
- Gentle wire and moulded contour cups provide natural shaping.
- Back panels smooth your body under clothing.

	10	12	14	16
B		•	•	
C		•	•	•
D	•	•	•	•
DD	•	•	•	•

BLACK

CODE: BLK

\*While stocks last.





## SO SMOOTH T-SHIRT YZL6

- Sleek T-Shirt design with smooth moulded cups eliminate lines under clothing.
- Swing back design minimises dig-in creating a smooth shape under clothing.
- Encased cushioned underwire maximises comfort for all day wear.

	10	12	14	16
B		•	•	
C	•	•	•	•
D	•	•	•	•
DD	•	•	•	•

ONYX

CODE: ONX

\*While stocks last.

# BERLEI CLASSICS



## SWEATERGIRL NON-CONTOUR Y50275

This iconic seamfree bra with non-stretch cups works with your bust naturally. It's supportive enough to wear everyday and offers a smooth finish. Smooth under clothing & super supportive, this non-padded bra is for every day.

- Features moulded non-stretch cups that work with your natural shape.
- Embossed floral print for a feminine finish.
- Firm back gore smooths lines under clothing.
- Padded hook and eye for extra comfort.

	10	12	14	16	18
B		•	•	•	
C	•	•	•	•	•
D	•	•	•	•	•
DD	•	•	•	•	•
E	•	•	•	•	•

**BLACK**

CODE: Z4I

**WHITE**

CODE: Z4J

**SOFT POWDER**

CODE: S81

**IVORY**

CODE: C48

**NUDE LACE**

CODE: PPT



\*Size 18E only available in C48.

\*PPT White stocks last.



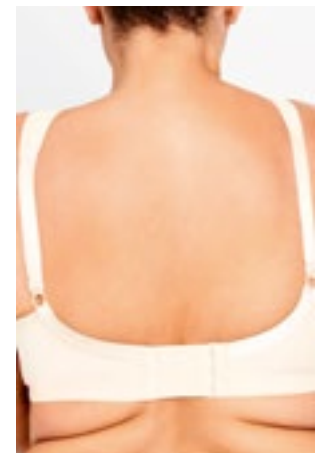
## ALL DAY COMFORT Y193KB

- Moulded non-contour cups and soft under bust band ensure maximum comfort.
- Padded shoulder straps are dig-free and distribute bust weight for all day comfort.
- Higher neckline and wide back for additional coverage.
- Designed to support fuller figured women.

	14	16	18	20	22	24
C			•	•		
D	•	•	•	•	•	•
DD	•	•	•	•	•	•
E	•	•	•	•	•	•

**SOFT BEIGE**

CODE: 581





## CLASSIC LACE UNDERWIRE Y5568B

- Traditional styling and panelled cup design for a classic shape.
- Reinforced lower cup and lace provide uplift and support.
- Designed for fuller figured women.

	14	16	18	20	22	24
C	•	•	•	•		
D	•	•	•	•	•	•
DD	•	•	•	•	•	•
E	•	•	•	•		



CODE: BLK



CODE: ALA



CODE: PRA



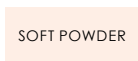
## MINIMISING UNDERWIRE Y516SB

- Minimising non-contour cups provide comfort whilst minimising the projection of the bust by as much as a cup size.
- Smooth microfibre fabric for a soft and comfortable fit that moulds to your body.
- Wide straps provide additional shoulder support.

	12	14	16	18	20
D	•	•	•	•	•
DD	•	•	•	•	•
E	•	•	•	•	•
F	•	•	•	•	•
G	•	•	•	•	•



CODE: BLK



CODE: S81



# BERLEI POST-SURGERY



## POST SURGERY CROP Y130W

Berlei has been a proud partner of Breast Cancer Network Australia (BCNA) since 2005, offering support to women affected by breast cancer.

Through our ongoing collaboration with BCNA we have developed a unique My Care Kit to use post-surgery and during radiation that features this post-surgery crop.

- A wirefree post-surgery cotton bra designed with the convenience of front and back opening for easy fastening.
- Moulded cotton blend cups provide a smooth look under clothing without the bulk.
- Cotton inner pockets accommodate a prosthesis.
- Comfortable cotton elastane fabric is breathable and soft against the skin.

	10	12	14	16	18	20
B	•	•	•			
C	•	•	•	•	•	
D	•	•	•	•	•	•
DD		•	•	•	•	•
E			•	•	•	

BODYTONE

CODE: L59



## CARING FOR YOU SOFT FORM W130W

- Lightweight cotton inner pockets designed for Berlei's post-surgery bras.
- Smooth poly cotton fabric that is soft against the skin.
- Cotton lining for extra comfort.
- Easy fit for your personal comfort.

SIZES S M L XL

BODYTONE

CODE: L59

\*While stocks last.





## BARELY THERE DELUXE POST SURGERY YYEQ

- The Post Surgery Deluxe Bra is a fashionable and flattering option to wear following a mastectomy.
- Softly lined reinforced straps for comfort and additional support.
- Cotton stretch inner pockets accommodate a prosthesis.
- Cotton lined cups are breathable and soft against the skin.
- Double layered back gore and padded hook and eye minimise dig in for extra comfort.
- Breast form inserts sold separately.

	10	12	14	16	18	20
B		•	•			
C	•	•	•			
D	•	•	•	•	•	
DD	•	•	•	•	•	•
E				•	•	

NUDE LACE

CODE: PPT

\*While stocks last.



## POST SURGERY ACTIVE YXVV

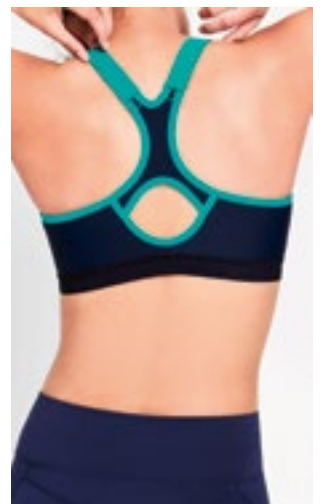
- Minimal stitching for comfort against the skin.
- Racerback design with straps that stay-put while you move.
- Pockets to accommodate a prosthesis.

	10	12	14	16	18	20
B	•	•	•			
C	•	•	•	•	•	
D	•	•	•	•	•	•
DD		•	•	•	•	•
E		•	•	•	•	•

GREEN SPORTIF

CODE: LLC

\*While stocks last.






**B**ERLEI SPORT

# SUPPORT FACTOR CHART

TESTED BY THE AUSTRALIAN INSTITUTE OF SPORT FOR BERLEI SINCE 2005

Single breast encapsulation gives you true support while maintaining a flattering, natural shape for ultimate comfort.

Berlei Support Factor (SF) ratings have been created through biomechanical testing and analysis to determine the appropriate level of breast bounce reduction required for different levels of activity.

		<b>EXTREME IMPACT</b> <ul style="list-style-type: none"><li>• Long Distance Running</li><li>• Kick-boxing</li><li>• Athletics</li></ul>	<b>SF4</b>
		<b>HIGH IMPACT</b> <ul style="list-style-type: none"><li>• Tennis</li><li>• Basketball</li><li>• Netball</li></ul>	<b>SF3</b>
		<b>MEDIUM IMPACT</b> <ul style="list-style-type: none"><li>• Weights</li><li>• Walking</li><li>• Cycling</li></ul>	<b>SF2</b>



**BERLEI SPORTS BRAS REDUCE BOUNCE BY UP TO 60%**



## BERLEITECH SMOOTH UNDERWIRE BRA YY4K

- Cross back functionality for additional support and flexibility.
- Terry-lined fabric with wicking provides cushioning for superior support and comfort.
- Moisture management technology used to transfer moisture away from the body for faster drying and reducing fabric cling.
- Ultra sonic panels maximise support.
- Ribbed underbust band hugs the body and reduces friction.

	10	12	14	16	18
B					
C					
D	•	•	•	•	•
DD	•	•	•	•	•
E	•	•	•	•	•

Black

CODE: BLK

\* While stocks last.



## BERLEITECH ULTIMATE PERFORMANCE YXXH

Designed with an elite athlete in mind, Ultimate Performance has been engineered with the latest in Berlei innovation to provide extreme support in an underwire bra.

- Contour cups provide breathability and reduce chafing with racer back clip and hook adjustment designed to allow for multiple shoulder strap positions.
- Moisture wicking padded shoulder straps, underbust and body band minimises irritation in high rub areas.
- Ideal for extreme impact activities such as long distance running, kick boxing and athletics.

	10	12	14	16	18
C	•	•	•	•	•
D	•	•	•	•	•
DD	•	•	•	•	•
E	•	•	•	•	•

BLACK

CODE: BLK





## FULL SUPPORT UNDERWIRE Y533WB

Designed specifically for fuller busted and fuller figured woman during medium impact exercise.

- Padded straps are shaped to sit firmly on the shoulder.
- Cross-back functionality for additional support and flexibility.
- Ventilation zones and breathable fabric combine for extra comfort.

	12	14	16	18	20
DD	•	•	•	•	•
E	•	•	•	•	•
F	•	•	•	•	•
G	•	•	•	•	
H	•	•	•		



CODE: BLK



## ELECTRIFY MESH UNDERWIRE YYN7\*

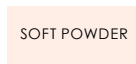
The Electrify Underwire, the cornerstone of our most successful sports bra franchise, is designed for high impact activity. In this bra, vibrant colour, contemporary design lines and technical sophistication combine for a stylish yet supportive workout.

- Cross-back functionality for additional support and flexibility.
- Lined cups and shoulder straps provide superior comfort.
- Mesh panels for increased breathability.

	8	10	12	14	16	18
A	•	•	•			
B	•	•	•	•	•	
C	•	•	•	•	•	•
D		•	•	•	•	•
DD		•	•	•	•	•
E		•	•	•	•	•



CODE: BLK



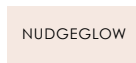
CODE: S81



CODE: WHI



CODE: POD



CODE: NF7\*



CODE: DRS\*



\*8A-C only available in NF7.

\* While stocks last.



## ELECTRIFY MESH CONTOUR YYPV\*

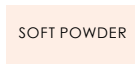
- Cross-back functionality for additional support and flexibility.
- Light contour cups provide shape and support.
- Mesh panels for increased breathability.

	10	12	14	16	18
A	•				
B	•	•	•	•	
C	•	•	•	•	•
D	•	•	•	•	•
DD	•	•	•	•	•



BLACK

CODE: BLK



SOFT POWDER

CODE: S81\*\*



NAVY

CODE: POD



WHITE

CODE: WHI



INDIGO GREY

CODE: DRS\*

\*8A only available in S81, 10A only available in WHI.

\*\*S81 while stocks last.

\* While stocks last.



## ELECTRIFY MESH CROP YYPV

The Electrify Mesh Crop is a high impact sports bra designed to increase freedom of movement during high intensity exercise.

- Contoured underwire bra encapsulated within a fashionable crop design.
- Padded shoulder straps provide comfort and support.
- Mesh panels provide increased breathability.
- Racer back design allows for flexibility and freedom of movement.
- Lined cups and shoulder straps provide superior comfort and reduces bounce.

	8	10	12	14	16
A	•	•	•		
B	•	•	•	•	•
C	•	•	•	•	•
D		•	•	•	•



BLACK

CODE: BLK



WHITE

CODE: WHI\*

\*WHI while stocks last.





## ELECTRIFY MESH WIREFREE YY87

- Cross-back functionality for additional support and flexibility.
- Lined cups and shoulder straps provide superior comfort and reduces bounce.
- Contemporary mesh detailing.

	8	10	12	14	16
A		•	•	•	
B	•	•	•	•	•
C	•	•	•	•	•
D		•	•	•	•
DD		•	•	•	•



CODE: BLK\*



CODE: WHI

\*BLK while stocks last.



## ELECTRIFY UNDERWIRE Y556W\*

- Cross-back functionality for additional support and flexibility.
- Cotton-lined cups and shoulder straps provide superior comfort.
- Mesh panels for increased breathability.

	8	10	12	14	16	18
B	•	•	•	•	•	
C	•	•	•	•	•	•
D		•	•	•	•	•
DD		•	•	•	•	•
E		•	•	•	•	•



CODE: BK1



CODE: WHI

\*8B 8C while stocks last, 8C not available in WHI.

\* While stocks last.







## PROELITE MESH CROP YYLN

The ProElite is designed with the fuller busted woman in mind. Ideal for high impact sports, this bra provides superior support for women up to a G cup.

- Designed with fuller busts in mind.
- Maternity friendly in-built underwire provides extra support while maintaining a crop aesthetic.
- Scoop neckline and adjustable hook and loop straps.
- Spacer cups for increased breathability.
- Padded straps and flat seams prevent irritation.

	10	12	14	16	18	20
DD	•	•	•	•	•	•
E	•	•	•	•	•	•
F	•	•	•	•		
G	•	•	•	•		

BLACK

CODE: BLK





## SHIFT CONTOUR YJRJ

Created for high impact activities, the Shift Contour Bra offers on-trend styling without compromising comfort or support.

- Wide adjustable straps help to stabilise and minimise bounce.
- Cross-back functionality for additional support and flexibility.
- Mesh panels provide increased breathability.
- Wide base elastic anchors the bra to the body, preventing ride up.

	10	12	14	16
B	•	•	•	•
C	•	•	•	•
D	•	•	•	•
DD	•	•	•	•
E	•	•	•	•

BLACK

CODE: BA1

\*While stocks last.



## SHIFT UNDERWIRE YRK

Created for extreme impact activities, the Shift Underwire Bra offers on-trend styling without compromising comfort or support.

- Wide adjustable straps help to stabilise and minimise bounce.
- Cross-back functionality for additional support and flexibility.
- Mesh panels provide increased breathability.
- Wide base elastic anchors the bra to the body, preventing ride up.

	10	12	14	16	18
B	•	•	•	•	
C	•	•	•	•	•
D	•	•	•	•	•
DD	•	•	•	•	•
E	•	•	•	•	•
F	•	•	•	•	

BLACK

CODE: BA1\*

NUDE GLOW

CODE: NF7

\*10B in BA1 while stocks last.





## ACTIVE CUT BOYLEG WWRW1A\*

- Sleek sport boyleg brief, which offers a no visible line look.
- Fits comfortably under workout wear.
- A soft, no-dig waistband.
- Crafted from matte sheen microfibre, it features moisture wicking to ensure you stay cool and dry while you exercise.

SIZES 8 10 12 14 16 18

BLACK

CODE: BA1

While stocks last.





# BERLEI BRIEFS



## BARELY THERE LACE FULL BRIEF WVFB

- Soft stretch lace front full brief.
- Wide dig-free waistband for added comfort.
- Co-ordinating bra available.

SIZES 10 12 14 16 18 20

BLACK

CODE: BLK

IVORY

CODE: C48

NUDE LACE

CODE: PPT

NAVY

CODE: POD



## BARELY THERE LACE BIKINI WWUT1A

- Soft stretch lace front bikini.
- Wide dig-free waistband for added comfort.
- Co-ordinating bra available.

SIZES 10 12 14 16 18

BLACK

CODE: BLK

IVORY

CODE: C48

NAVY

CODE: POD

NUDE LACE

CODE: PPT





## BARELY THERE LUXE BOYLEG WX8H1A\*

- Comfortable fit with a lightweight fabric and stretch lace.
- Smoothing, dig-free, waistband.
- Boyleg shape.
- Coordinating bra available.

SIZES 10 12 14 16 18

BLACK

CODE: BLK

IVORY

CODE: C48

\*While stocks last.



## NOTHING MICRO HIPSTER WZD31A\*

- Lightweight microfibre for a smooth finish under clothing.
- Dig-free waistband and leg finish for added comfort.
- Versatile hipster cut.

SIZES 10 12 14 16

BLACK

CODE: BLK

NAKED

CODE: NAK

\*While stocks last.





## NOTHING MICRO HI CUT WZD21A\*

- Lightweight microfibre for a smooth finish under clothing.
- Dig-free waistband and leg finish for added comfort.
- Hi cut shape.

SIZES 10 12 14 16 18 20

NAKED

CODE: NAK

\*While stocks last.



## LACE BIKINI WVF9\*

- Smooth finish under clothes.
- Delicate lace trim.
- Classic everyday bikini shape.

SIZES 10 12 14 16

BLACK

CODE: BLK

NUDE 2

CODE: PPN

\*While stocks last.







## NOTHING NATURALS G-STRING WZD01A

- Lightweight cotton/modal microfibre for a smooth finish under clothing.
- Dig-free waistband and leg finish for added comfort.
- G-string cut for invisibility under clothing.

SIZES 10 12 14 16

BLACK

CODE: BLK

SOFT POWDER

CODE: S81



## NOTHING NATURALS HI CUT WZCY1A

- Lightweight cotton/modal microfibre for a smooth finish under clothing.
- Dig-free waistband and leg finish for added comfort.
- Hi cut for additional waistline coverage.

SIZES 10 12 14 16 18 20

BLACK

CODE: BLK

SOFT POWDER

CODE: S81

WHITE

CODE: WHI





## NOTHING NATURALS HIPSTER WZCZ1A

- Lightweight cotton/modal microfibre for a smooth finish under clothing.
- Dig-free waistband and leg finish for added comfort.
- Versatile bikini cut.

SIZES 10 12 14 16

BLACK

CODE: BLK

SOFT POWDER

CODE: S81



## NOTHING NATURALS FULL BRIEF WZCX1A\*

- Lightweight cotton/modal microfibre for a smooth finish under clothing.
- Dig-free waistband and leg finish for added comfort.
- Full brief cut for higher waistline coverage.

SIZES 10 12 14 16 18 20

BLACK

CODE: BLK

SOFT POWDER

CODE: S81





## NOTHING NATURALS CAMISOLE WYZU1A

- Lightweight fabric that is smooth against the skin for comfort.
- Cotton and modal blend for superior softness and a light hand-feel that moulds to the shape of your body.
- Extra length in the body for additional coverage.

SIZES S M L XL



BLACK

CODE: BLK



WHITE

CODE: WHI

Plantex®





## **BASICS**

---

Playtex has a long and rich history producing quality bras and shapewear for women. With a loyal customer base since 1965 when Playtex launched the iconic Cross Your Heart Bra, Playtex has become one of the most recognised and trusted brand names in the world.

Always innovating, whilst staying true to its age old promise of comfort, Playtex has a range of bras for 2020 that truly look as good as they feel.

From sculpted support and pretty details, Playtex celebrates busy women everywhere.



## FLEX FIT NON-CONTOUR WIREFREE Y1239H

- Wirefree design for all day comfort.
- Wider straps with comfort U-Design for stay in place confidence.
- Cool comfort design helps keep you cool and comfortable.
- Minimal seam, 4-way stretch keeps you comfortable and moves with you.
- Simplified smart sized system for ease of shopping.

### SMART SIZING

---

S M L XL 2XL

• • • • •



**BLACK**  
BLK



**NUDE**  
NUD



## FLEX FIT CONTOUR WIREFREE Y1124H

- Wirefree design for all day comfort.
- Foam cups and 2-ply sides shape you beautifully and deliver terrific support.
- Wider straps with comfort U-design for stay in place confidence.
- Cool comfort design helps keep you cool and comfortable.
- Minimal seam, 4-way stretch keeps you comfortable and moves with you.
- Simplified smart sized system for ease of shopping.
- Side and back smoothing.

### SMART SIZING

---

S M L XL 2XL

• • • • •



**BLACK**  
BLK



**NUDE**  
NUD



**WHITE**  
WIT



**LIGHT  
BEIGE**  
282



Light beige while stocks last.

## PLAYTEX SMART SIZING

The Playtex smart sizing system makes shopping easy! Refer to the chart below as a guide to convert cup and band sizes to the simplified Playtex smart sizes on our Flex Fit range.



## FLEX FIT CONTOUR DOT WIREFREE Y1119H

Your favourite Flex Fit Contour is now available in a Jacquard Dot.

### SMART SIZING

S M L XL 2XL  
• • • • •



CRYSTAL  
GREY  
AXT



IN THE NAVY  
KUO



# CONTOUR SWIRL

## WIREFREE Y1176H

- Same support as our Flex Fit bras, but in a cup and band size.
- Wirefree design for all day comfort.
- Soft comfort band.
- Ultra thin stretch foam cups for shaping.
- Adjustable straps for custom fit.
- Comfort that moves with you.
- Fit, flexibility and comfort.

	12	14	16	18	20
B		•	•	•	•
C	•	•	•	•	•
D	•	•	•	•	•
DD		•	•	•	•



WHITE  
SWIRL  
WIT



NUDE  
SWIRL  
NUD







## FLORAL DELUSTRE Y1035H

- Hidden panels contour your curves for a naturally shaped look.
- Full coverage cups give you fuller coverage and excellent support.
- Deep centre front to keep the bra in place.
- Wider straps for less dig-in.
- Comfort U-shaped back helps straps stay in place.
- All-over stretch fabric ensures great fit and ease of movement.

	12	14	16	18	20
C	•	•	•	•	•
D	•	•	•	•	•
DD	•	•	•	•	•
E	•				

  
**NATURAL  
BEIGE**  
 011

Size 12E while stocks last.



## ULTRALIGHT ILLUSION NECKLINE Y1259H

- Breathable lightweight spacer cups for added comfort.
- Built-in cup sling for added support.
- 2-ply back for smooth appearance under clothes.
- Built-up convertible straps with back adjustment.
- Added back smoothing.

	12	14	16	18	20
B	•	•	•	•	•
C	•	•	•	•	•
D	•	•	•	•	•
DD	•	•	•	•	•

  
**BLACK**  
 BLK

  
**NUDE**  
 NUD







## ULTIMATE LIFT AND SUPPORT POSTURE BRA

WIREFREE Y1277H

- Strategic cup stitching for side support to give you an all-round flawless silhouette.
- Cushioned strap design helps prevent dig-in.
- Wirefree design for ultimate all day comfort.
- Double layer panels provide back support and help improve posture.
- Front closure for ease of dressing.

	14	16	18	20	22	24
B	•	•	•	•		
C	•	•	•	•	•	
D	•	•	•	•	•	
DD		•	•	•	•	•

  
**NUDE**  
 NUD



## CROSS YOUR HEART

WIREFREE Y1001H

- Power mesh back for greater strength and stability.
- Wide straps help relieve pressure on shoulders.
- Wirefree design for all day comfort.
- Discreet uplift panel within cup lining provides added support.

	12	14	16	18	20	22	24
B	•	•	•	•	•	•	
C	•	•	•	•	•	•	•
D	•	•	•	•	•	•	•
DD		•	•	•	•	•	•

  
**BEIGE**  
 BGE



# ULTIMATE LIFT & SUPPORT

## WIREFREE Y1055H

- Strategic cup stitching for side support to give you an all-round flawless silhouette.
- Cushioned strap design helps prevent dig-in.
- Wirefree design for ultimate all day comfort.

	14	16	18	20	22	24
B	•	•	•	•		
C	•	•	•	•	•	
D	•	•	•	•	•	
DD	•	•	•	•	•	•
E	•	•	•	•	•	•
F		•	•	•	•	•



\*Size F available in BLK, WIT, NUD from July 2020

	12	14	16	18	20	22
B	•	•	•	•		
C	•	•	•	•	•	•
D	•	•	•	•	•	•
DD	•	•	•	•	•	•
E	•	•	•	•	•	•



\*Size 12 available in Sandshell & Mother of Pearl while stocks last.





## COMFORT STRAP WIREFREE Y1041H

- All-over stretch fabric ensures a great fit and moves with you.
- Wide cushioned comfort straps help relieve pressure on shoulders.
- Wirefree design for all day comfort.

	14	16	18	20	22	24	26
B	•	•	•	•	•		
C	•	•	•	•	•		
D	•	•	•	•	•	•	
DD	•	•	•	•	•	•	•
E		•	•	•	•	•	•

  
**NATURAL  
BEIGE**  
 011



## FITS BEAUTIFULLY WIREFREE Y1005H

- Supportive cup construction offers a personalised fit.
- Wide straps help relieve pressure on shoulders.
- Wirefree design for ultimate all day comfort.

	12	14	16	18	20	22
B	•	•	•	•		
C	•	•	•	•	•	•
D	•	•	•	•	•	•
DD	•	•	•	•	•	•

  
**BEIGE**  
 BGE





# NOTES

A series of horizontal dotted lines for writing notes.





# Terms and conditions

## HANES GROUP SUPPLIER TERMS AND CONDITIONS OF SALE

In these terms and conditions, the following terms have the following meanings unless the context requires otherwise:

**Hanes Group Company** means Hanes Australia Pty Limited ABN 56 098 704 646 and any company that is a related body corporate (as defined in the Corporations Act 2001) of Hanes Australia Pty Ltd including but not limited to Hanes Innerwear Australia Pty Limited and Sheridan Australia Pty Limited.

**Hanes Group Supplier** means, in connection with the supply of any goods, the Hanes Group Company making the supply of goods to you.

We (being here the applicable Hanes Group Supplier) shall only supply goods to you on the following terms and conditions unless we agree, in writing, to vary these terms and conditions.

### 1. PAYMENT

- 1.1. All invoices are due and payable in full on the last banking day of the month following the date of invoice.
- 1.2. We reserve the right, to charge a fee for overdue payments, credit card payments, cancellation of orders, manual processing of payments, and to pass on bank fees imposed on payments.
- 1.3. Should you fail to pay your invoices by the due date then:
  - (a) we may charge interest on any overdue invoices at the penalty rate fixed under the Penalty Interests Rates Act 1983 (Victoria), calculated and payable daily, compounded from the due date until the invoice is paid in full;
  - (b) you shall pay all our costs and expenses (including legal costs determined as between solicitor/own client and mercantile agents fees) which may be incurred in the recovery or attempted recovery of the overdue amounts from you.

### 2. SETTLEMENT DISCOUNT

- 2.1. You may take advantage of a discount for early settlement of accounts at the rates agreed between us from time to time provided:
  - (a) payment in full takes place within the time specified; and
  - (b) you do not have any other invoices outstanding beyond their due date at the time of payment.

### 3. PRICES AND DELIVERY

- 3.1. Our prices are subject to change without notice.
- 3.2. GST at the prevailing rate at the date of invoice will be included in the amount due and payable on the invoice. We state on the face of the invoice whether or not the prices shown on the invoice are inclusive or exclusive of such tax.
- 3.3. Whilst we shall use all reasonable endeavours to comply with your particular delivery requirements and order specifications, you will not be entitled to cancel the whole or part of your order or to claim compensation by reason of our failure to comply with your delivery requirements or minor variations to the goods.

### 4. RESERVATION OF TITLE

- 4.1. You acknowledge that the ownership of goods delivered by us to you ("the goods") is only transferred to you when you have paid all sums owing to us on the purchase price of the goods and that until such time we have the right to call for or recover the goods at our option (for which purposes our employees or agents may enter your premises) and you are obliged to deliver up the goods if so directed by us.
- 4.2. You agree to keep the goods in a fiduciary capacity for us until such time as ownership is transferred to you.
- 4.3. Notwithstanding the foregoing, you may sell the goods to a third party in the ordinary course of business.
- 4.4. You must insure the goods.
- 4.5. You must account to us for all proceeds of the goods including any insurance proceeds.

### 5. PPSA

- 5.1. You acknowledge and agree that you grant us a Purchase Money Security Interest in the goods and their Proceeds including any Accounts and Accessions by virtue of the retention of title pursuant to Clause 4.
- 5.2. You agree that:
  - (a) these terms and conditions of sale or subject to us giving you at least 30 days' notice, such other terms and conditions as we may adopt from time to time, apply to the supply of goods by us to you to the exclusion of all other terms and conditions of sale or purchase;
  - (b) no variation to our terms and conditions of sale will be of any effect unless agreed to by us in writing;
  - (c) the retention of title arrangement pursuant to clause 4 secures the payment of the purchase price of supplied goods;
  - (d) you will do all the things necessary including providing all information we require to register a Financing Statement or Financing Change Statement on the Personal Properties Securities Register (PPSR) a to perfect our Purchase Money Security Interest;
  - (e) you will not change your name, ACN or ABN or other relevant PPSR identifier, without first notifying us;
  - (f) you waive your rights to receive a verification statement in respect of any Financing Statement or Financing Change Statement in respect of the Purchase Money Security Interest created pursuant to these terms and conditions.
  - (g) you must pay our costs of any discharge or necessary amendment of any Financing Statement or Financing Change Statement.
- 5.3. To the maximum extent permitted by law, you agree that the following sections of the PPSA will not apply:
  - (a) Section 95
  - (b) Section 118
  - (c) Section 121(4)
  - (d) Section 130;
  - (e) Section 132(4)
  - (f) Section 135
  - (g) Section 142; and
  - (h) Section 143.
- 5.4. To the maximum extent permitted by law, you waive any rights you may have pursuant to receive notices under the following sections of the PPSA:
  - (a) Section 95;
  - (b) Section 118;
  - (c) Section 121;
  - (d) Section 132; and
  - (e) Section 135.

## Terms and conditions

5.5. Unless otherwise defined in these terms and conditions of sale, the terms and expressions used in this Clause 5 have the meanings given to them or by virtue of the PPSA.

5.6. "PPSA" means the Personal Properties Securities Act 2009.

### 6. RISK

Notwithstanding the provisions of Clauses 4 and 5 you accept all risk of loss and damage of the goods, whether caused by you or not, following delivery of the goods.

### 7. RETURN OF GOODS

7.1. We will not accept returns for credit without prior authorisation or to the extent required by law.

7.2. Any goods which you return for credit will only be accepted if they are defective or in the original packaging, in pristine order and condition and accompanied by documentation showing:

- your name, address and account number
- our invoice number
- reason for return
- our authorisation number

7.3. If we authorise the return of goods, the goods must be carried by our nominated carrier at your cost.

### 8. WITHHOLDING SUPPLY

8.1. We reserve the right, irrespective of whether or not an order has been accepted and without notice to you, to withhold supply to you to the extent permitted by law and we will not be liable for loss or damage resulting directly or indirectly from such action where:

- (a) we have insufficient goods to fulfil the order;
- (b) the goods ordered have been discontinued; or
- (c) we have determined, in our absolute discretion, that credit should no longer be extended to you.

### 9. MINIMUM ORDERS

9.1. We reserve the right to specify the minimum order value which we shall accept from time to time and to impose a surcharge should you require delivery of goods having a value less than the minimum order value.

### 10. MODIFICATIONS TO LABELS

10.1. You may not, without our written consent, alter, remove or obliterate any labels which we attach to the goods.

### 11. INTELLECTUAL PROPERTY RIGHTS

11.1. You acknowledge that you do not have any intellectual property rights, whether by way of copyright or registered design or otherwise, in the goods and that we retain ownership of all such intellectual property.

### 12. GOVERNING LAW

12.1. The laws of the State of Victoria govern our trading.

12.2. You agree with us to submit to the non-exclusive jurisdiction of the Courts of Victoria and the Federal Court of Australia and agree that any legal proceedings may be heard in those courts.

### 13. CLAIMS

13.1. Any claims by you for short delivery must be made within 7 days of the delivery.

13.2. Any other claims for adjustment to any invoice for any reason whatsoever (other than defective goods) must be made in writing within 60 days of delivery.

### 14. CLERICAL ERRORS

14.1. We reserve the right to correct clerical errors without notification.

### 15. PURPOSE OF SUPPLY

15.1. The goods are supplied to you solely for the purpose of sale direct to consumers. You will not on-sell or otherwise re-supply the goods to a third party without the written consent of Hanes Australasia. Sales may only occur from the site or premises nominated on your account.

15.2. Use of Hanes Australasia's product and advertising images taken from Brandsnet, our ecommerce sites or elsewhere is not permitted without our prior written consent.

### 16. NO LIABILITY FOR CONSEQUENTIAL LOSS

6.1. You agree we have no liability to you for any Consequential Loss. Consequential Loss means loss of expected savings, loss of use, loss of opportunity, loss of profit, loss of revenue, increased financing costs, loss arising from delay, or any consequential, special or indirect loss or damage, whether or not the possibility or potential extent of the loss or damage was known or foreseeable, and whether arising from a claim under indemnity, contract, tort (including negligence), statute or otherwise.

### 17. LIMITATION OF LIABILITY IN RESPECT OF AUSTRALIAN CONSUMER LAW GUARANTEES

17.1. To the extent that goods supplied by us are not goods of a kind ordinarily acquired for personal, domestic or household use and you are deemed to be a consumer for the purposes of section 64A of the Australian Consumer Law, you agree that our liability for a failure to comply with a consumer guarantee that you may have the benefit of under the Australian Consumer Law (other than a guarantee under ss 51 (title), 52 (undisturbed possession) and 53 (undisclosed securities)), is limited to, at our option, to one or more of the following:

- (a) replacement of the goods or the supply of equivalent goods;
- (b) the repair of the goods;
- (c) the payment of the cost of replacing the goods or of acquiring
- (d) equivalent goods; or
- (e) the payment of the cost of having the goods repaired.



# HANES *Brands Inc*

A.B.N. 40 098 742 655

2020 Basics Catalogue

## HANES AUSTRALASIA HEAD OFFICE

PO Box 3005

Cotham LPO

KEW VIC 3101

Level 1, 115 Cotham Road

KEW VIC 3101

## CUSTOMER SERVICE FREECALL

### TELEPHONE:

1800 645 045

### FACSIMILE:

1800 003 345

### CUSTOMER SERVICE EMAIL:

PBUGRETAIL@HANES.COM

### CONSUMER ENQUIRIES EMAIL:

PBUGCONSUMER@HANES.COM

## NUORDER

### WEBSITE:

[WWW.NUORDER.COM](http://WWW.NUORDER.COM)

### TELEPHONE:

(03) 8862 1658

### FACSIMILE:

1800 003 345

## INDEPENDENT SALES TEAM

### MELBOURNE METRO / N.E. VICTORIA / GIPPSLAND

WENDY STARK

MOB: 0418 571 165

FAX: (03) 8862 1600

EMAIL: WENDY.STARK@HANES.COM

### MELBOURNE METRO / N.W. AND WEST VICTORIA

CAROLYNNE CLARKE

MOB: 0417 952 859

FAX: (03) 8862 1600

EMAIL: CAROLYNNE.CLARKE@HANES.COM

### SYDNEY METRO

PAUL MASLEN

MOB: 0418 474 508

FAX: (02) 4861 6257

EMAIL: MASLEN.AGENCIES@BIGPOND.COM

### REGIONAL NEW SOUTH WALES

TBA

### QUEENSLAND / NORTHERN NSW

NERIDA SATOUR

MOB: 0417 943 676

FAX: (07) 3286 6062

EMAIL: NERIDA.SATOUR@HANES.COM

### SOUTH AUSTRALIA / NORTHERN TERRITORY

JULIE MOORE

MOB: 0418 814 463

FAX: (08) 8241 1219

EMAIL: JULIE.MOORE@HANES.COM

### WESTERN AUSTRALIA

STRATEGIC BOUTIQUE

CUSTOMER SERVICE - DEBORAH KNUCKEY

PH: (08) 6140 1200

MOB: 0413 431 708

FAX: (08) 6140 1299

EMAIL: DKNUCKEY@STRATEGICWA.COM.AU

REPRESENTATIVE:

LYNDSAY FIELD - MOB 0413 876 958

### TASMANIA

ROB BRYAN AGENCIES

MOB: 0419 003 793

EMAIL: RSBRYAN@BIGPOND.COM

### SALES / NUORDER COORDINATOR

REBECCA WITHERS

PHONE: (03) 8862 1658

EMAIL: REBECCA.WITHERS@HANES.COM

